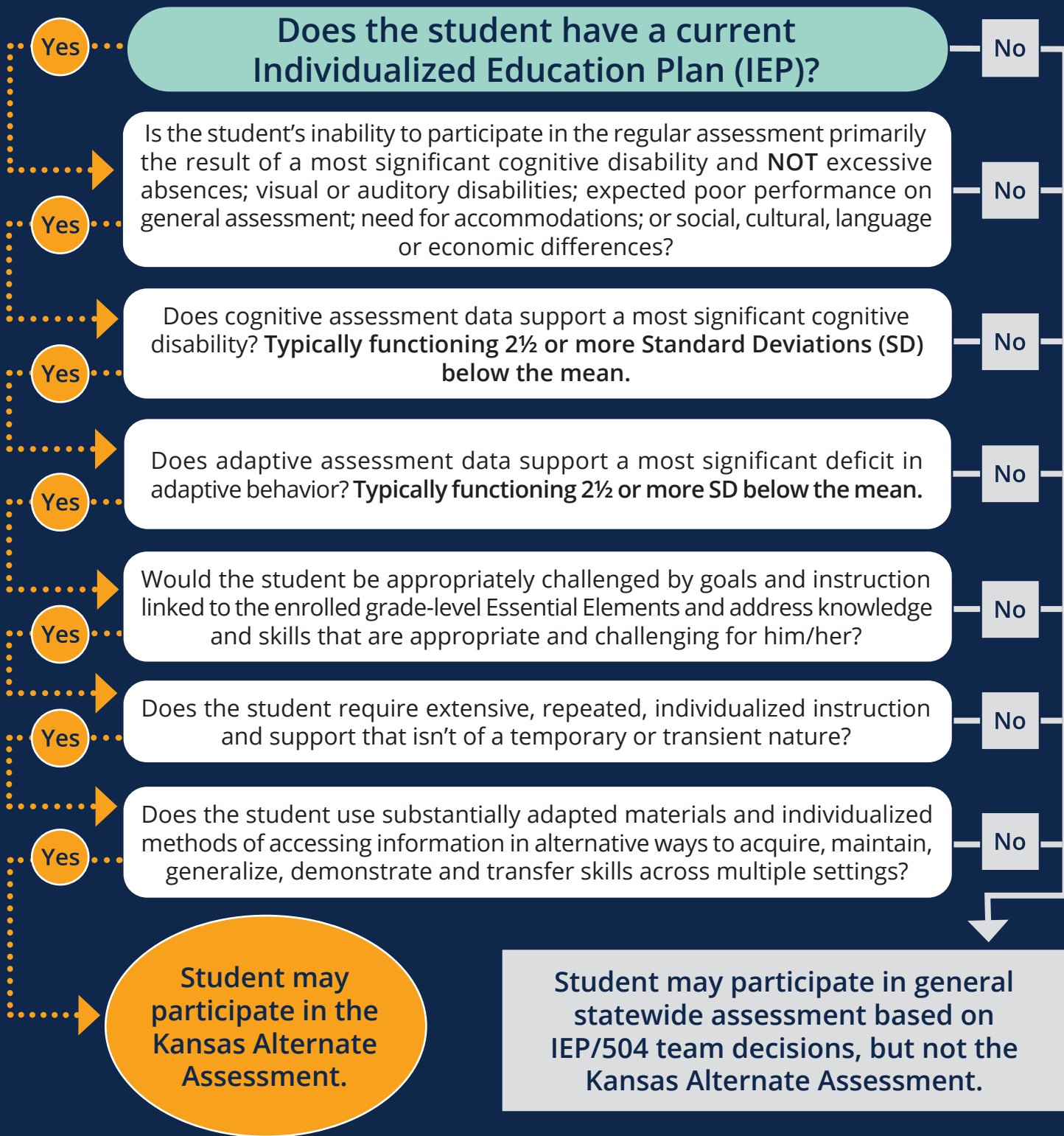
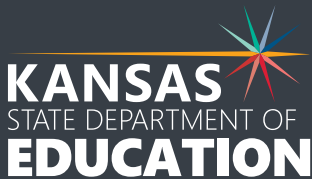


KANSAS ALTERNATE ASSESSMENT FLOW CHART



For more information, contact:

Cary Rogers
Education Program Consultant
Special Education and Title Services
(785) 296-0916
cary.rogers@ksde.gov



Kansas State Department of Education
900 S.W. Jackson Street, Suite 102
Topeka, Kansas 66612-1212
www.ksde.gov

Kansas leads the world in the success of each student.

Aug. 26, 2025