

REPORT DATE: MM-DD-YYYY

End of Year Report
Class Results 20XX-XX



TEACHER NAME:

DISTRICT:

SCHOOL:

DISTRICT ID:

STATE:

| Student Name | Grade | Subject | EEs Tested | EEs at or above Target | Skills Mastered | Achievement Level |
|--------------|-------|-----------------------|------------|---------------------------|-----------------|--------------------|
| | 3 | English Language Arts | 10 | 4 | 34 | At Target |
| | | Mathematics | 8 | 0 | 11 | Approaching Target |
| | 4 | English Language Arts | 11 | 0 | 0 | Emerging |
| | | Mathematics | 8 | 0 | 0 | Emerging |

Achievement Levels

The student demonstrates **emerging** understanding of and ability to apply content knowledge and skills represented by the Essential Elements.

The student's understanding of and ability to apply targeted content knowledge and skills represented by the Essential Elements is **approaching the target**.

The student's understanding of and ability to apply content knowledge and skills represented by the Essential Elements is **at target**.

The student demonstrates **advanced** understanding of and ability to apply targeted content knowledge and skills represented by the Essential Elements.



School Aggregate Report

Achievement Summaries

Overall performance on DLM assessments is described in the Number of Students Achieving at Each Performance Level report. Achievement is described using four performance levels.

This report shows the number of students in the school achieving at each performance level on DLM assessments in the subjects tested in the past two years. This report can be used to understand overall student achievement in each year. The previous year's results are included for comparison.



Number of Students Achieving at Each Performance Level

This report shows the number of students across all grades in the DLM School achieving at each performance level on DLM assessments in the past two years. The percent above each bar is the percent of students achieving **At Target** and **Advanced**.

Advanced

These students demonstrated advanced understanding of and ability to apply content knowledge and skills represented by the Essential Elements.

At Target

These students' understanding of and ability to apply content knowledge and skills represented by the Essential Elements is at target.

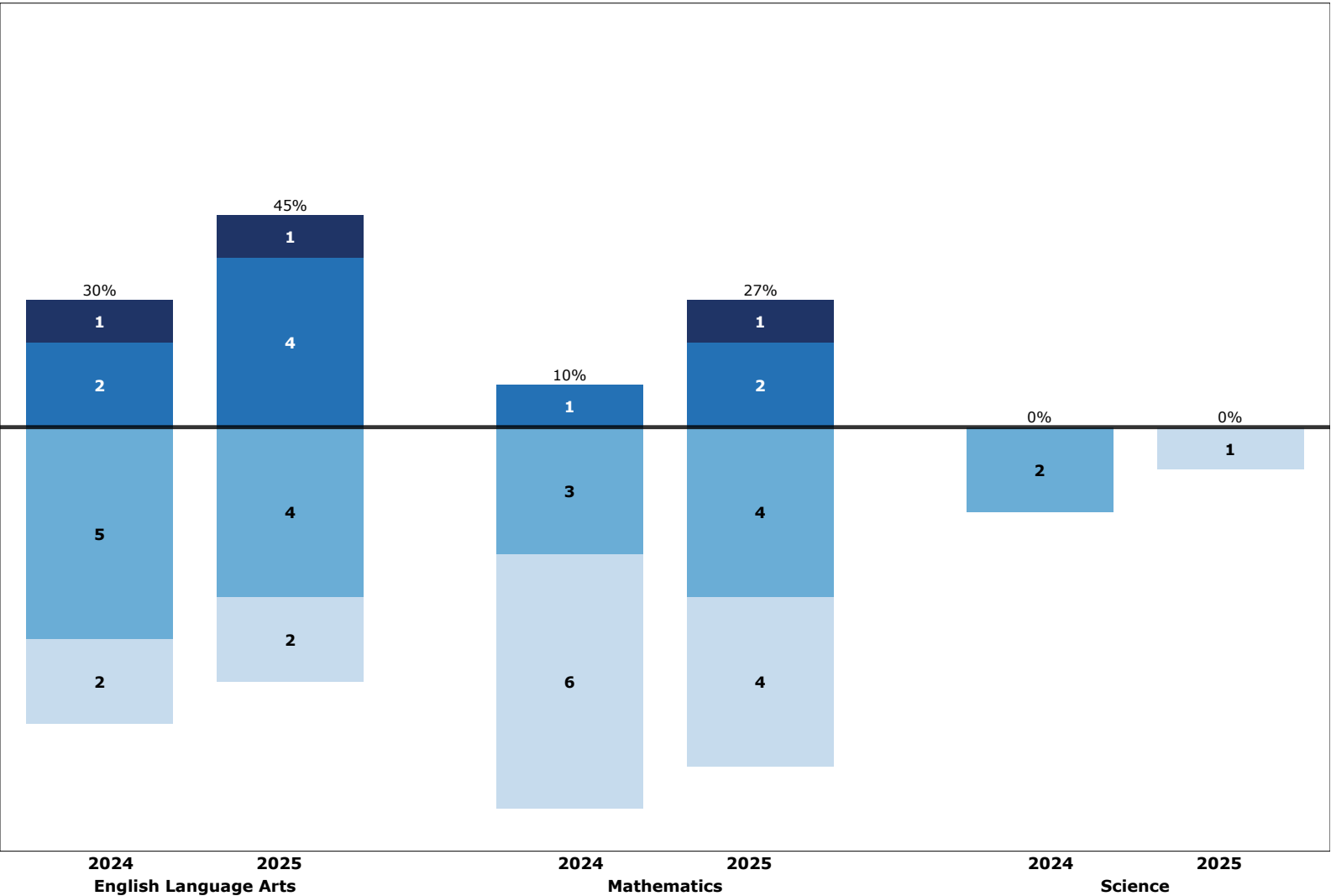
Proficiency

Approaching the Target

These students' understanding of and ability to apply content knowledge and skills represented by the Essential Elements is approaching the target.

Emerging

These students demonstrated emerging understanding of and ability to apply content knowledge and skills represented by the Essential Elements.



- Numbers that do not fit inside of the bar section are not displayed.



District Aggregate Report

Achievement Summaries

Overall performance on DLM assessments is described in the Number of Students Achieving at Each Performance Level reports. Achievement is described using four performance levels.

These reports show the number of students in the district achieving at each performance level on DLM assessments in the subjects tested in the past two years. Reports show overall performance across all students in the district and performance by grade level. These reports can be used to understand overall student achievement in each year. The previous year’s results are included for comparison.

Contents

| | |
|-----------------------------------------------------------|---|
| Achievement Summary – Overall..... | 2 |
| Achievement Summary by Grade – English Language Arts..... | 3 |
| Achievement Summary by Grade – Mathematics..... | 4 |
| Achievement Summary by Grade – Science..... | 5 |



Number of Students Achieving at Each Performance Level

This report shows the number of students across all grades and schools in DLM District achieving at each performance level on DLM assessments in the past two years. The percent above each bar is the percent of students achieving **At Target** and **Advanced**.

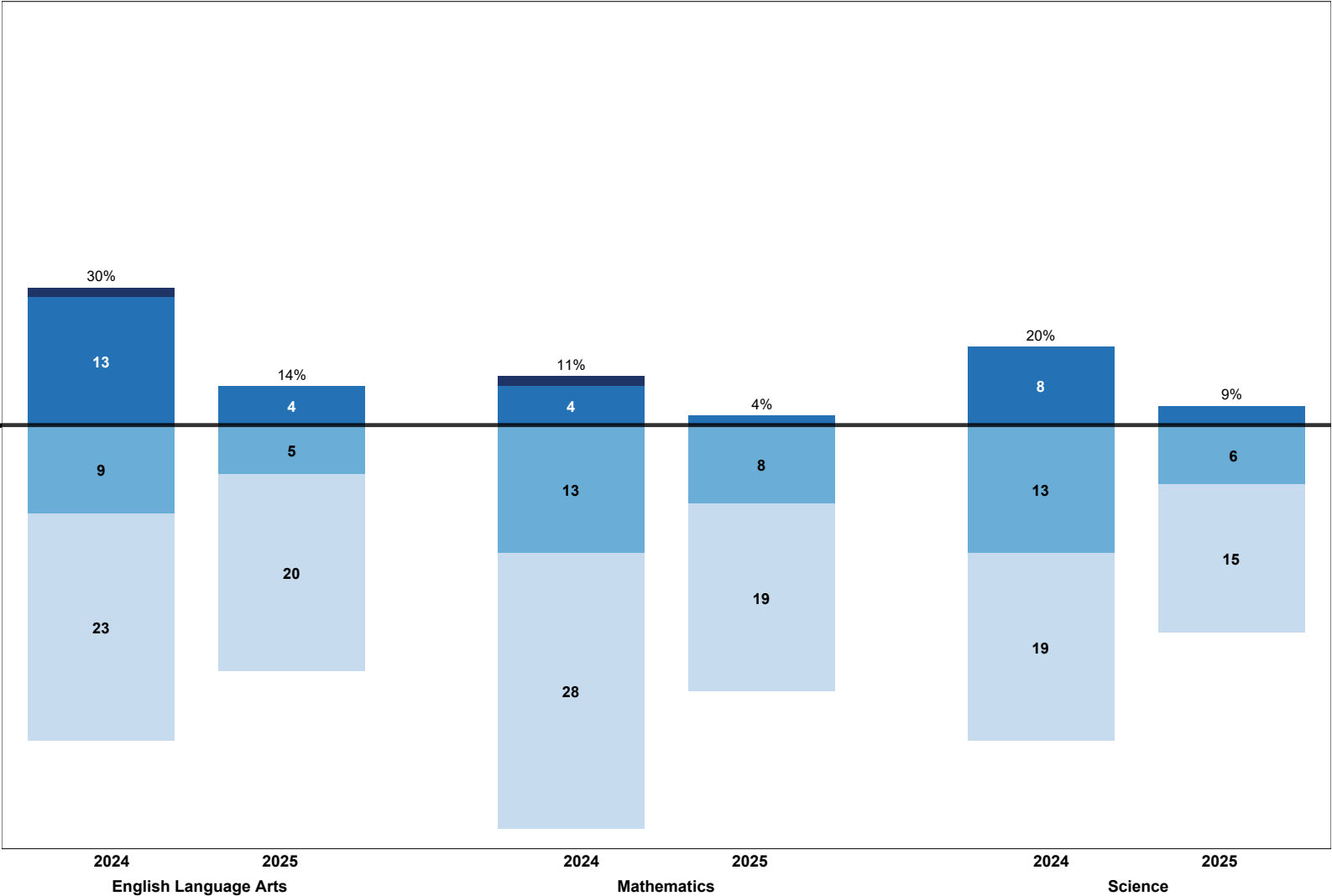
Advanced
These students demonstrated advanced understanding of and ability to apply content knowledge and skills represented by the Essential Elements.

At Target
These students' understanding of and ability to apply content knowledge and skills represented by the Essential Elements is at target.

Proficiency

Approaching the Target
These students' understanding of and ability to apply content knowledge and skills represented by the Essential Elements is approaching the target.

Emerging
These students demonstrated emerging understanding of and ability to apply content knowledge and skills represented by the Essential Elements.



- Numbers that do not fit inside of the bar section are not displayed.



Number of Students Achieving at Each Performance Level in English Language Arts by Grade

This report shows the number of students across all grades and schools in DLM District achieving at each performance level on DLM English Language Arts assessments in the past two years. The percent above each bar is the percent of students achieving **At Target** and **Advanced**.

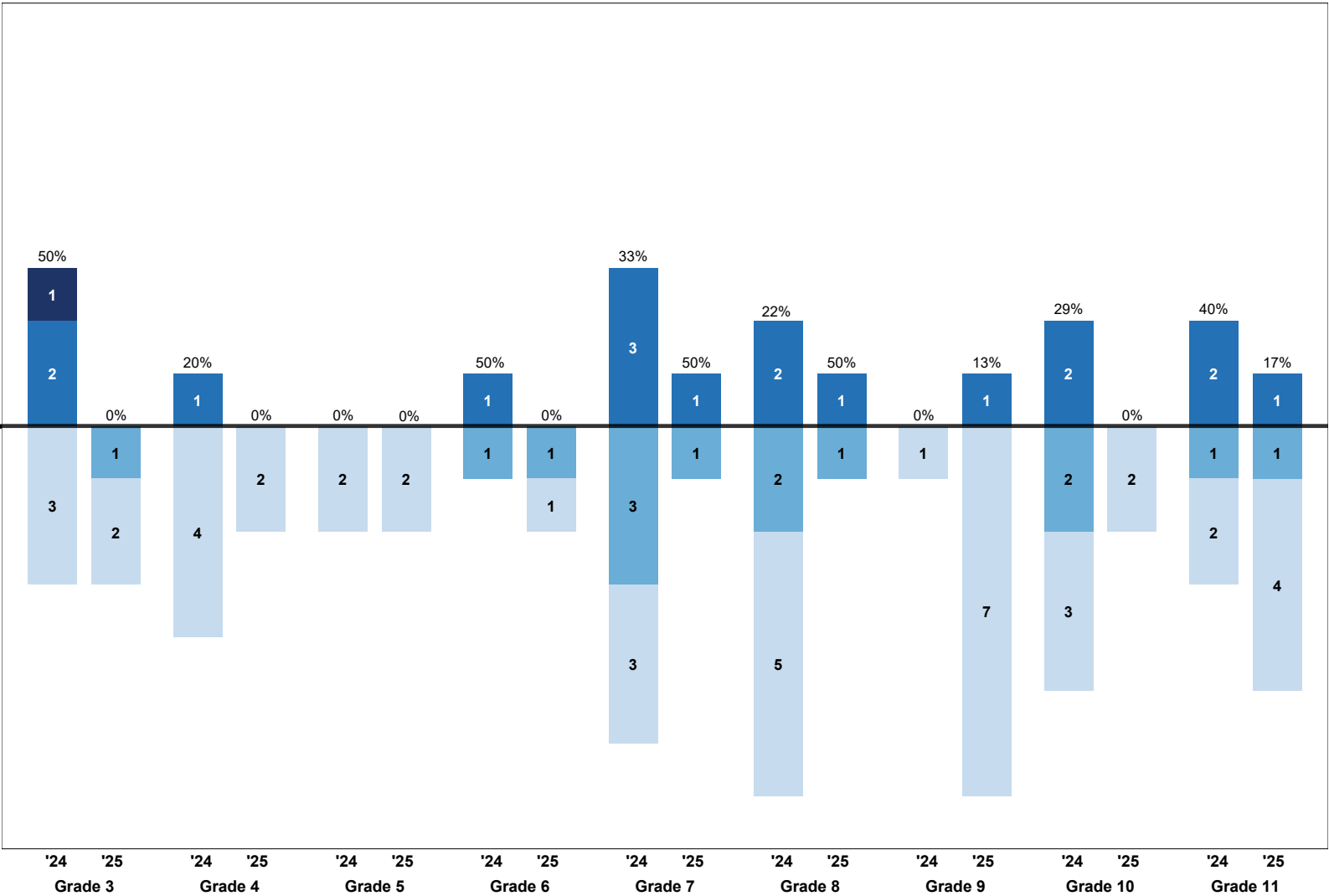
Advanced
These students demonstrated advanced understanding of and ability to apply content knowledge and skills represented by the Essential Elements.

At Target
These students' understanding of and ability to apply content knowledge and skills represented by the Essential Elements is at target.



Approaching the Target
These students' understanding of and ability to apply content knowledge and skills represented by the Essential Elements is approaching the target.

Emerging
These students demonstrated emerging understanding of and ability to apply content knowledge and skills represented by the Essential Elements.



- Grades not assessed in English language arts in [current year] are not displayed. N/A indicates that the grade was not assessed in [previous year].
- Numbers that do not fit inside of the bar section are not displayed.

End of Year Report State Results 20XX-XX



STATE:

| Grade | Subject | Number of Students Tested | Emerging | Approaching Target | At Target | Advanced | At Target or Advanced |
|-------|-----------------------|---------------------------|----------|--------------------|-----------|----------|-----------------------|
| 3 | English Language Arts | 89 | 44 | 20 | 24 | 1 | 28% |
| | Mathematics | 89 | 57 | 31 | 1 | 0 | 1% |
| 4 | English Language Arts | 119 | 44 | 30 | 41 | 4 | 38% |
| | Mathematics | 120 | 69 | 39 | 7 | 5 | 10% |
| 5 | English Language Arts | 106 | 45 | 26 | 31 | 4 | 33% |
| | Mathematics | 106 | 69 | 26 | 6 | 5 | 10% |
| | Science | 104 | 85 | 7 | 11 | 1 | 12% |
| 6 | English Language Arts | 107 | 51 | 38 | 15 | 3 | 17% |
| | Mathematics | 107 | 85 | 17 | 2 | 3 | 5% |
| 7 | English Language Arts | 122 | 41 | 55 | 18 | 8 | 21% |
| | Mathematics | 123 | 85 | 24 | 6 | 8 | 11% |
| 8 | English Language Arts | 104 | 61 | 30 | 13 | 0 | 13% |
| | Mathematics | 105 | 71 | 23 | 10 | 1 | 10% |
| | Science | 89 | 56 | 20 | 13 | 0 | 15% |
| 10 | Science | 106 | 74 | 15 | 15 | 2 | 16% |
| 11 | English Language Arts | 114 | 62 | 37 | 14 | 1 | 13% |
| | Mathematics | 115 | 74 | 34 | 5 | 2 | 6% |

STATE:

Achievement Levels

The student demonstrates ***emerging*** understanding of and ability to apply content knowledge and skills represented by the Essential Elements.

The student's understanding of and ability to apply targeted content knowledge and skills represented by the Essential Elements is ***approaching the target***.

The student's understanding of and ability to apply content knowledge and skills represented by the Essential Elements is ***at target***.

The student demonstrates ***advanced*** understanding of and ability to apply targeted content knowledge and skills represented by the Essential Elements.