



Mini-Map for SCI.EE.HS.LS1-1

Subject: Science

Life

Grade: 9–12

Learning Outcome

DLM Essential Element	Grade-Level Standard
SCI.EE.HS.LS1-1 Explain how different organs of the body carry out essential functions of life.	HS-LS1-1 Construct an explanation based on evidence for how the structure of DNA determines the structure of proteins which carry out the essential functions of life through systems of specialized cells.

Linkage Level Descriptions

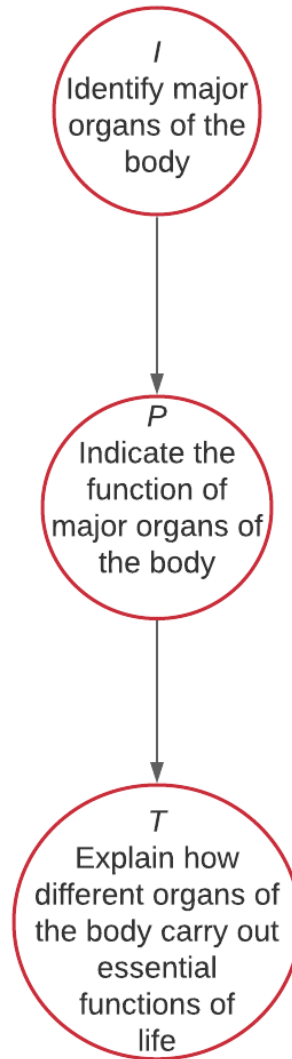
Initial	Precursor	Target
Identify major organs of the body (e.g., heart, brain, kidneys, liver, lungs).	Indicate the biological functions of major organs of the body.	Explain how different organs of the body carry out essential functions of life.

Instructional Resources

Linkage Level	Instructional Activities
Initial/Precursor/Target	N/A
Connections	
Science and Engineering Practices	Constructing Explanations and Designing Solutions
Crosscutting Concepts	Structure and Functions
Released Testlets	
See the Guide to Practice Activities and Released Testlets .	

[Link to Text-Only Map](#)

SCI.EE.HS.LS1-1 Explain how different organs of the body carry out essential functions of life.



Map Key	
I	Initial
P	Precursor
T	Target