

Beginning Communicators Symbols

January 23, 2019

Dynamic Learning Maps® (DLM®) PD Webinar

Beginning Communicators

DLM is committed to ensuring full participation and successful assessment of EACH student with significant cognitive disabilities, including those who are at the earliest stages of communication.

That includes students who communicate
in any of the following ways:

- Speech
- Sign
- Symbols
- Gestures
- Behaviors

It also includes students who are not intentional in their efforts to communicate with others.

9% do not have symbolic
communication

6% with intention but no symbolic
language

+ 3% with no obvious intent or symbolic
language

Non-Symbolic Communication

- **Physiological** - displaying functions of body (e.g., increased rate of breathing)
- **Vocal** - sounds & utterances
- **Affect** - displaying feeling or emotion
- **Body Movements** - general body motion
- **Gestures**- limb or body part movement
- **Facial Expressions**- using sense of sight

Symbols

Myths Regarding Symbols (Romski & Sevcik, 2005)

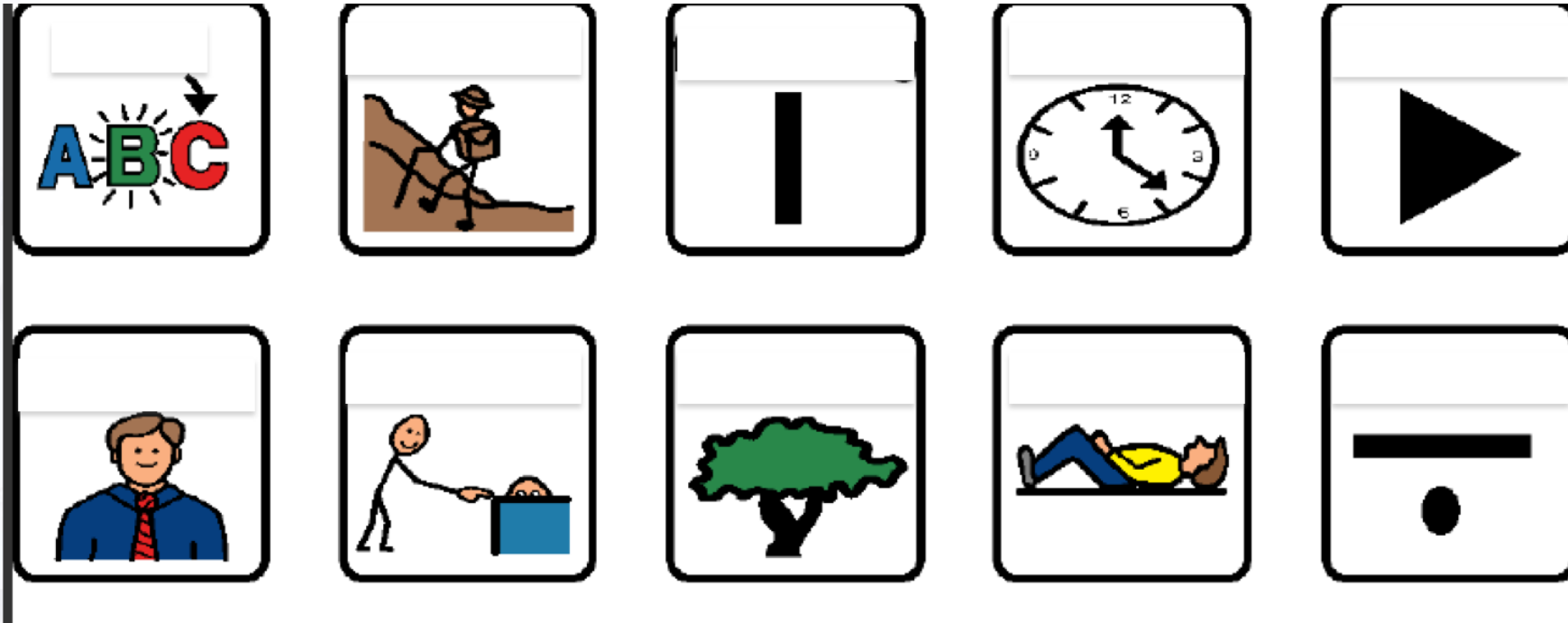
- Myth 1: Prerequisite skills are required
- Myth 2: There is a hierarchy of symbol use

Different Types of Symbols

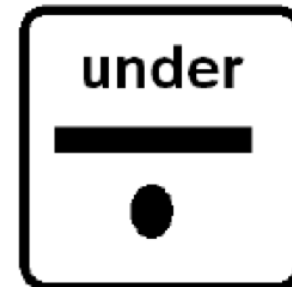
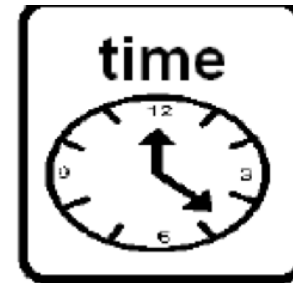


cat

Try reading this! (Part 1)



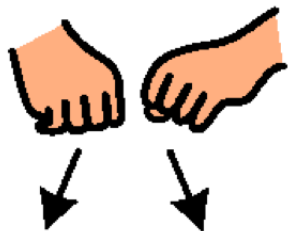
Were you close?



Try Reading This? (Part 2)

尝试一下

Try Reading This? (Part 2 cont.)



尝试一下

THANK YOU!

For more information: www.dynamiclearningmaps.org

For Professional Development:
www.dlmpd.com