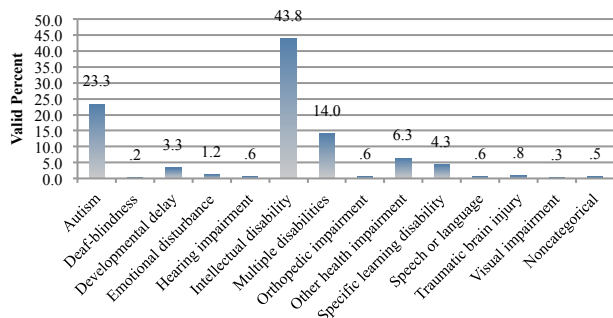


Supplemental Handout The First Contact Census Student Characteristics

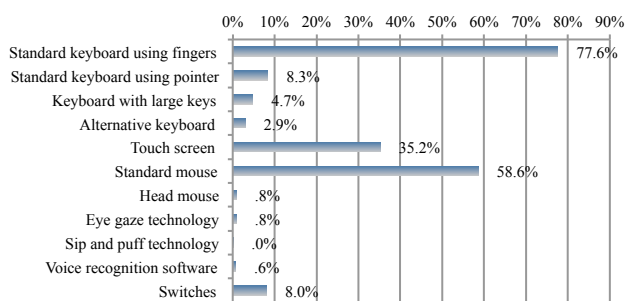
44,782 valid records as of 6/04/2013



The figure to the left depicts the percentage of students classified in each primary disability category

- The majority of students in the sample were classified as a student with Autism, an intellectual disability, or multiple disabilities
- While nominal, some classifications were unexpected
 - Specific learning disability
 - Sensory classifications
 - Emotional disturbance

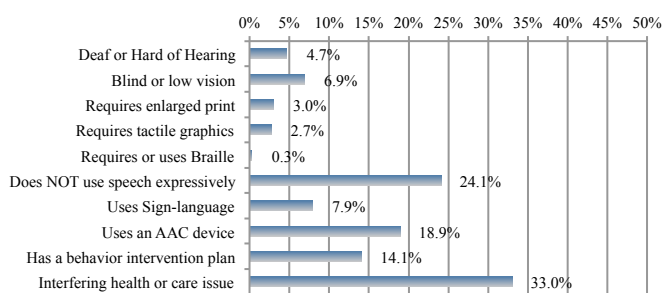
Multiple Response: Computer Access



The figure to the left describes the percentage of students that can access a computer using a specific tool

- The data was collected under a multiple response format--consider each access mechanism separately
- The majority of students can access a computer through a conventional tool
- Less than 4% of the sample has not had the opportunity to access a computer
- The DLM technology enhanced items will be accessible to students that rely on switches with scanning

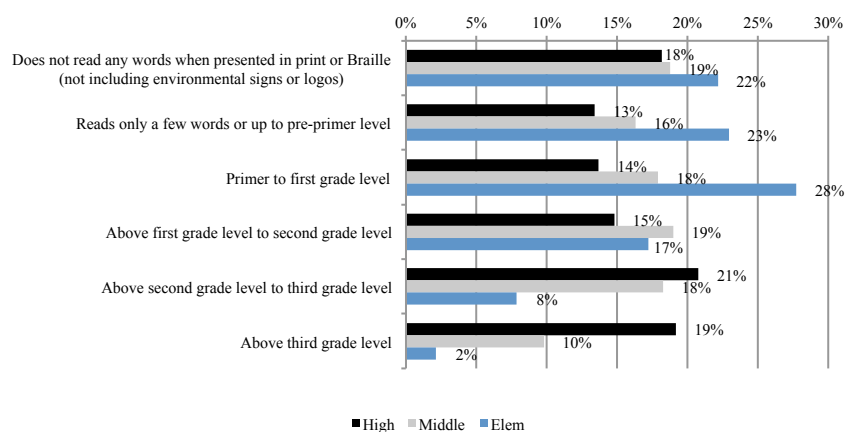
Assessment Considerations



The figure to the left depicts the percentage of students with specific characteristics related to assessment needs

- The DLM development team is considering the unique needs of each student
- Student needs will guide the presentation of items and assistive tools
- Administration of small item-sets, with a system pause and an exit option, will minimize frustration

Approximate Reading Level



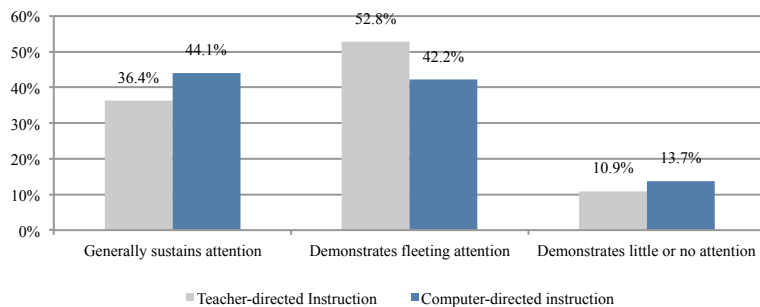
The figure to the left presents the percentage of students performing at each approximate reading level by grade band

- Although the percentage of high school students rated as reading 'at or above the second grade level' surpasses the percentage of elementary and middle school students, the graphic highlights that students within a grade band possess varied knowledge, skills, and abilities (KSA)
- A student's grade of record does not provide enough information to present items targeted to the student's unique KSA

Supplemental Handout The First Contact Census Student Characteristics

44,782 valid records as of 6/04/2013

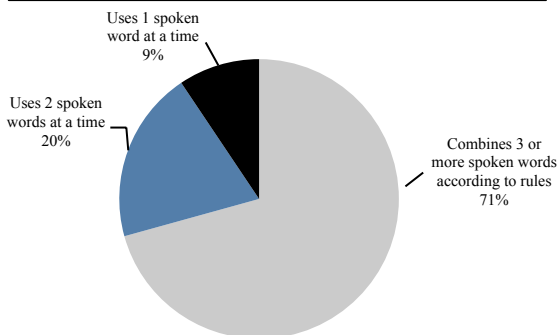
Attention to Type of Instruction



The figure to the left presents the percentage of students attending to each type of directed instruction

- Greater than 40% of the students demonstrate fleeting attention to either teacher-directed instruction or computer-directed instruction. The students in this category require repeated prompts to sustain attention
- Greater than 10% of the students demonstrate little or no attention to either type of directed instructional activities

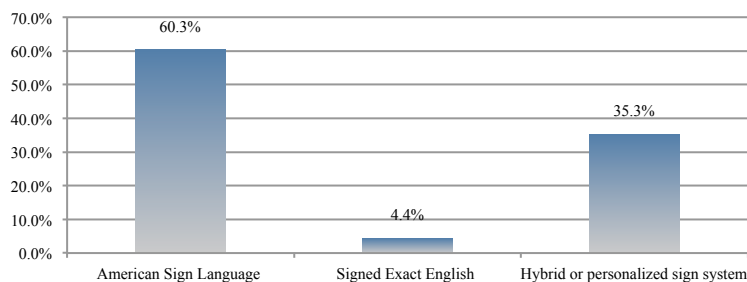
Highest Level of Expressive Communication with Speech



The figure to the left presents the percentage of students within each level of expressive communication with speech (given that he/she uses speech)

- The majority of students who use speech to meet their communication needs do so by regularly combining 3 or more words according to grammatical rules

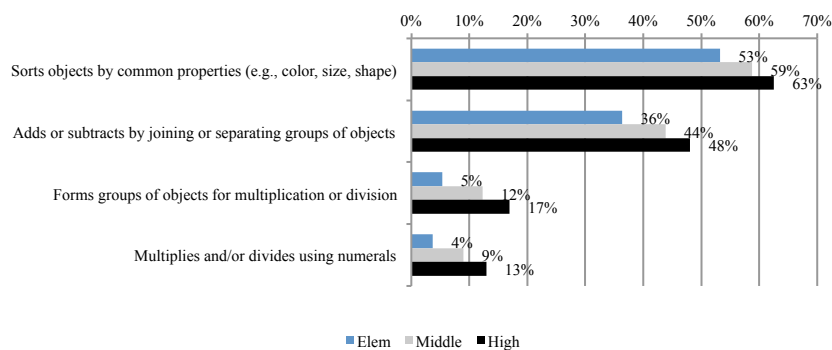
Type of Sign Language



The figure to the left presents the percentage of students that use a specific type of sign language (given that he/she uses sign language)

- The data represents the students' primary sign system
- Of the students who use sign language, approximately 7% of the rated sample, the majority use American Sign Language

Mathematics: Student demonstrates the skill greater than 80% of the time



The figure to the left presents the percentage of students that perform a mathematics skill greater than 80% of the time by grade band

- This category of performance signifies that the student is close to skill mastery
- This is a multiple response item type, consider each skill differently
- An expected trend is depicted within the chart
 - The most complex skill is demonstrated by the least number of students